

RE: Lead Service Line Inventory

Dear Valued Customer:

On December 16, 2021, the Environmental Protection Agency, EPA, developed new rules for the control of Lead and Copper in potable water. As a result of this action the Livingston Water System is required to complete a Lead Service Line Inventory (LSLI) prior to October 16, 2024. This LSLI will have to include an investigation of service line material for both the system owned side and customer owned side of service lines installed before July 1988.

What is the difference between System-Owned and Customer-Owned service line?

In Tennessee, the meter is the point of jurisdiction at which responsibility for maintenance and repair changes from the water system to customer control. The **System-Owned** is the portion of service line from the main transmission line to the meter. The **Customer-Owned** is the portion of service line from the meter to the customers interior plumbing.

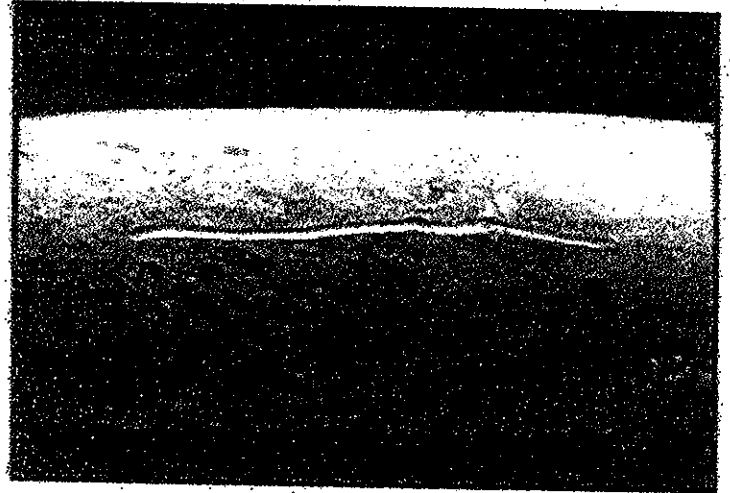
What should I do to help identify Lead Service Lines?

All homes constructed before July 1988 will need to be inventoried for the service line type. Livingston will inventory the system-owned portion. The customer is asked to help identify the customer-owned portion. There are 4 types of classification: Lead, Not Lead (PVC, PEX), Galvanized Requiring Replacement and Unknown. Galvanized Requiring Replacement is any galvanized line that is or was ever downstream of a lead service line. A customer may not know if they were ever downstream of a lead service line, for the purpose of the

inventory, it will be beneficial for Livingston to determine if the galvanized line requires replacement or not.

What is Lead?

Lead is a dull gray material and can be scratched with a key. The scratched area will appear silver. A strong magnet will not cling to a lead pipe, it will cling to a galvanized pipe. The potential for a lead service line can also be identified if a solder bulb is present.



Solder Bulb



DC Water: Understanding your Water Service Pipe

Types of water pipes:

Follow the guidance below or contact a licensed plumber to determine the material of your water pipes. To identify the material of your service pipe material on private property, check your household water service connection, typically located in the basement.

Homeowners should identify and replace old household pipes, particularly galvanized plumbing and sources of lead. The type of household plumbing can vary throughout your household.

Lead



A dull, silver-gray color that is easily scratched with a coin. Use a magnet - strong magnets will not cling to lead pipes.

Galvanized



A dull, silver-gray color. Use a magnet - strong magnets will typically cling to galvanized pipes.

Copper



The color of a copper penny.

Plastic

White, rigid pipe that is joined to water supply piping with a clamp.